

DPP

DAILY PRACTICE PROBLEMS

Class : XIIth
Date :

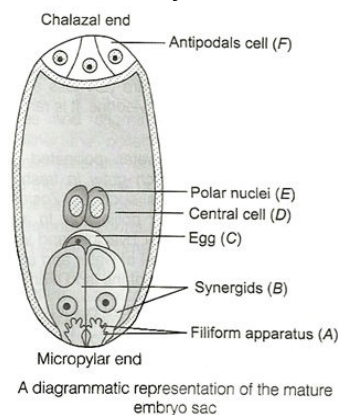
Solutions

Subject : BIOLOGY
DPP No. : 1

Topic :- Sexual Reproduction in Flowering Plants

- 1 (b)
Wind pollinated flowers are small, producing large number of pollen grains.
- 3 (b)
False In the embryo sac the cells, which are present at the chalazal end are called antipodal cells. At the micropylar end the synergid and egg cells are present.

Mature embryo sac



- 4 (d)
In **orthotropous ovule** (also called atropous or erect ovule), chalaza, micropyle and funicle lie in straight line, e.g., *Urtica*, *Polygonum* and *Peperomea*. This is a primitive type of ovule.
- 5 (d)
In center there is microspore mother cell. In which meiosis takes place which leads to formation of pollen grains
- 6 (d)
Sporopollenin is a polymer, tougher than lignin but with similar properties, composed chiefly of carotenoids, makes the exine of spores and pollen grains of plants providing resistance to

the same term and form male gametes (pollens)
by the process called microsporogenesis

- 16 **(a)**
Tapetum is the innermost layer of **anther** wall.
- 17 **(a)**
Double fertilization was discovered by **Nawaschin**
and **Strasburger**.
- 18 **(d)**
Pollens contain male gametes hence both the
terms are used in angiosperms during sexual
reproduction
- 19 **(b)**
In grafting technique, two parts of two related
plants are joined, so as to form composite plant. In
this, one plant having strong root system, is called
stock, while the other having better shoot is called
scion or **graft**. The grafting technique is successful
in two related plants having vascular cambium
(characteristic feature of dictyodons). Later is
absent in monocotyledons, so grafting cannot be
possible in monocots.
- 20 **(a)**
Ovules generally differentiate a single Megaspore
Mother Cell (MMC) in the micropylar region of the
undifferentiated tissue (nucellus). It is a large cell
containing dense cytoplasm and prominent
nucleus. The MMC undergoes meiotic division

ANSWER-KEY										
Q.	1	2	3	4	5	6	7	8	9	10
A.	B	B	B	D	D	D	A	B	B	C
Q.	11	12	13	14	15	16	17	18	19	20
A.	D	B	C	D	C	A	A	D	B	A