

# DPP

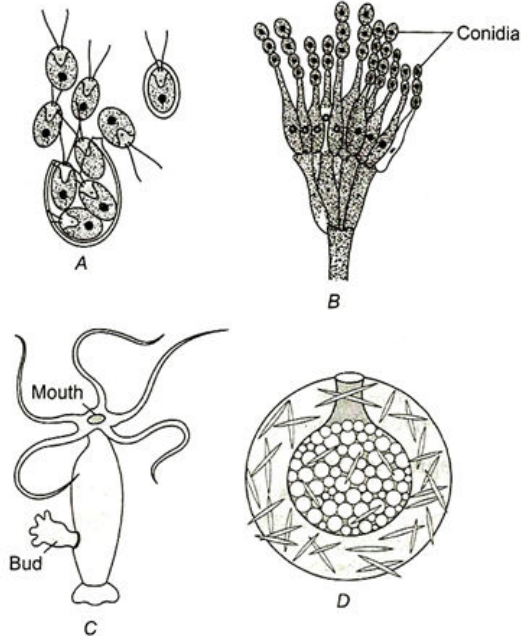
DAILY PRACTICE PROBLEMS

Class : XII<sup>th</sup>  
Date :

Subject : BIOLOGY  
DPP No. : 7

## Topic :- Reproduction in Organisms

- Clone is two or more individuals which are similar:  
a) Genetically                      b) Morphologically                      c) Sexually                      d) Both (A) and (B)
- Which of the following is wrongly matched pair?  
a) Tuber-Potato                      b) Rhizome-Ginger                      c) Bulbil-Agave                      d) Leaf buds-Banana
- Bamboo species flower only in  
a) 50-100 yrs                      b) 25-50 yrs                      c) 75-100 yrs                      d) 60-80 yrs
- Somaclonal variation appears in plants:  
a) Growing in polluted soil or water                      b) Exposed to gamma rays  
c) Raised in tissue culture                      d) Transformed by recombinant DNA technology
- During favourable conditions, *Amoeba* reproduces by:  
a) Binary fission                      b) Multiple fission                      c) Both of these                      d) None of these
- Asexual reproduction in plants is called  
a) Vegetative reproduction                      b) Syngamy  
c) Parthenocarpy                      d) Parthenogenesis
- Identify the following diagram



a. Zoospore in *Chlamydomonas*

b. Conidia of *Penicillium*

c. Buds in *Hydra*

d. Gemmules in sponge

All the above are

a) Bodies involved in sexual reproduction

b) Bodies involved in asexual reproduction

c) Bodies of young ones

d) All the above are correct

8. The process of release of egg from the ovary is called:

a) Reproduction

b) Ovulation

c) Menstruation

d) Insemination

9. Juvenile phase in plants, is

a) Vegetative phase

b) Reproductive phase

c) Growth phase

d) Senescence phase

10. Essential and most critical event in sexual reproduction is

a) Fertilization

b) Fusion of male and female gametes

c) Division in male and female gametes

d) Both (a) and (b)

11.



The above figure depicts

a) Budding

b) Binary fission

c) Fission

d) Zoospore

12. Find out correct order of vegetative propagules of plants like potato, ginger, Agave, Bryophyllum and

- water hyacinth
- a) Offset, bulbil, leaf bud, rhizome and eyes  
b) Leaf bud, bulbil, offset, rhizome and eyes  
c) Eyes, rhizome, bulbil, leaf bud and offset  
d) Rhizome, bulbil, leaf bud, eyes and offset
13. Nuclear membrane is absent in:  
a) Monera                      b) Protista                      c) Fungi                      d) Plantae
14. *Bryophyllum* can be propagated vegetatively by:  
a) Stem                      b) Root                      c) Leaf                      d) Flower
15. Self-fertilisation occurs in the  
a) Bisexual flower              b) Unisexual flower              c) Both (a) and (b)              d) Monoecious flower
16. Vegetative propagation in *Pistia* occurs by:  
a) Stolon                      b) Offset                      c) Runner                      d) Sucker
17. One of the followings is not the characteristic feature of cyanobacteria:  
a) They are multicellular              b) They form colonies  
c) They form blooms in polluted water bodies              d) They can fix atmospheric nitrogen
18. The condition, in which, both male and female reproductive organs are found on the same plant, is called  
a) Unisexual                      b) Bisexual                      c) Both (a) and (b)              d) Monoecious
19. Male gametes are also called  
a) Antherozoid                      b) Sperm                      c) Egg                      d) Both (a) and (b)
20. Bamboo plant flowers only once in their life time, generally 50-100 years, produce larger number of fruits and die. Blue stretches were formed by flowering of plant. *Strobilanthus kunthiana* in Kerala, Karnataka and Tamil Nadu. It flowers once in how many years?  
a) 15 years                      b) 12 years                      c) 20 years                      d) 48 years