

DPP

DAILY PRACTICE PROBLEMS

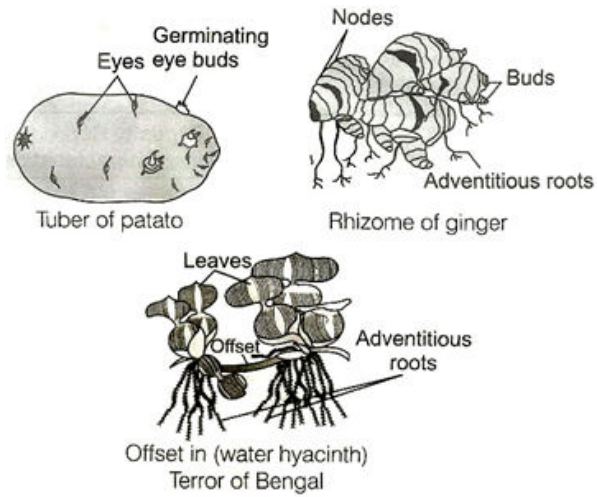
Class : XIIth
Date :

Solutions

Subject : BIOLOGY
DPP No. : 1

Topic :- Reproduction in Organisms

- 4 (c)
Binary fission It is the mode of reproduction in which the single organism divides into two parts, *i.e.*, *Amoeba*, *Paramecium*
- 7 (a)
Seasonal breeders which reproduced in the favourable season only. Their reproductive organs starts functioning due to seasonal changes thus they have the specific time period in which the reproduction takes place *e.g.*, Mammals (dog, cow, etc.)
- 10 (a)
True. When both the sexes are present on the same organism called hermaphrodite, *e.g.*, Earthworm, leech, etc
- 12 (c)
Ant, aphids, cockroaches are unisexual only earthworm have both the sexes (hermaphrodite)
- 19 (b)
In the given diagram three figures are there first figure indicate the fusion of male and female gametes
Second figure indicate the zygote because there are two nuclei visible in completely fused condition
Third figure indicates the complete one cell after fusion is over, all is there can be called new individual
- 20 (d)
All examples shown below are, the examples of vegetative reproduction



ANSWER-KEY										
Q.	1	2	3	4	5	6	7	8	9	10
A.	D	B	B	C	D	D	A	A	D	A
Q.	11	12	13	14	15	16	17	18	19	20
A.	C	C	D	D	B	D	D	C	B	D