

# DPP

DAILY PRACTICE PROBLEMS

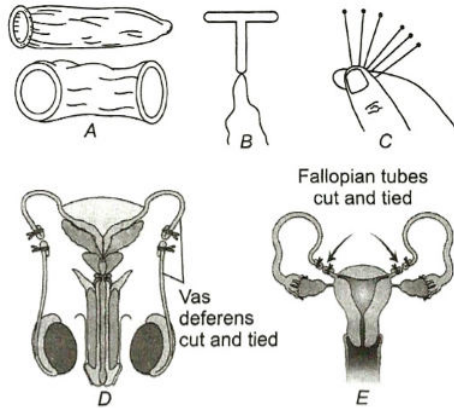
Class : XII<sup>th</sup>  
Date :

Subject : BIOLOGY  
DPP No. : 9

## Topic :- Reproductive Health

- July 11 is :  
a) World Environment day  
b) World Population day  
c) World AIDS day  
d) World Education day
- What was the world human population in 2011?  
a) 6 billion  
b) 7 billion  
c) 3 billion  
d) 5 billion
- “Saheli” contraceptive oral pill was developed at:  
a) Department of Biotechnology, New Delhi  
b) CDRI, Lucknow  
c) NEERI, Nagpur  
d) Department of Molecular Biology, Hyderabad
- STDs caused by viruses are  
I. AIDS  
II. Hepatitis-B  
III. Genital herpes  
a) I, II and III  
b) I and III  
c) II and III  
d) I and II
- Artificial insemination mean:  
a) Transfer of sperms of husband to a test tube containing ova  
b) Artificial introduction of sperms of a healthy donor into the vagina  
c) Introduction of sperms of a healthy donor directly into the ovary  
d) Transfer of sperms of a healthy donor to a test tube containing ova
- Emergency contraceptives are effective if used within:  
a) 72 hrs of coitus  
b) 72 hrs of ovulation  
c) 72 hrs of menstruation  
d) 72 hrs of implantation
- The number of organisms in population are added by:  
a) Immigration  
b) Birth  
c) Emigration  
d) Both (A) and (B)
- Certain characteristic demographic features of developing countries are:  
a) High fertility, high density, rapidly rising mortality rate and a very young age distribution  
b) High infant mortality rate, low fertility, uneven population growth and a very young age distribution  
c) High mortality, high density, uneven population growth and a very old age distribution

- d) High fertility, low rapidly falling mortality rate, rapid population growth and a very young age distribution
9. India's population in June 2011 was  
a) 121 carore                      b) 115 carore                      c) 110 carore                      d) None of these
10. The Test-tube Baby Programme employs which one of the following techniques?  
a) Intra uterine insemination (IUI)                      b) Gamete intra fallopian transfer (GIFT)  
c) Zygote intra fallopian transfer (ZIFT)                      d) Intra cytoplasmic sperm injection (ICSI)
11. Primary infertile patient is the person who;  
a) Never conceived                      b) Could conceive  
c) Can't produce ova                      d) None of the above
12. IVF in which zygote with ...A... then 8 blastomere is transferred into female body it is called ...B...  
a) A-more; B-IUT                      b) A-less; B-IUT                      c) A-less; B-ZIFT                      d) A-less; B-ICSI
13. Indicators of the improved reproductive health of the society are  
a) Better detection and cure of STD  
b) Improved medical facilities  
c) Decreased maternal and infant mortality rates  
d) All of the above
14. MMR (Measles, Mumps, Rubella) vaccine is given at  
a) 15-25 months                      b) 15-18 months                      c) 2 years                      d) 5 years
15. Amniocentesis is the detection of  
a) Chromosomal pattern by taking amniotic fluid  
b) Chorionic fluid from developing embryo  
c) Chromosomal pattern after child birth  
d) Chromosomal pattern before fertilization
16. Ovulation do not occur in lactational period because of  
a) Inhibin                      b) Prolactin                      c) Prostaglandin                      d) Oxytocin
17. Hepatitis-B and HIV spreads through  
a) Sharing needless                      b) Transfusion of blood  
c) Infected mother to child                      d) All of the above
18. Match the following figures with their respective identify  
I. Tubectomy    II. Vasectomy  
III. Implants    IV. Condoms  
V. Copper-T



- a) A-IV; B-V; C-III; D-II; E-I
- c) A-I; B-II; C-III; D-IV; E-V

- b) A-IV; B-IV; C-II; D-I; E-V
- d) A-III; B-IV; C-V; D-I; E-II

19. Oral contraceptives are prescribed in females to check:

- a) Ovulation
- b) Fertilization
- c) Implantation
- d) Entry of sperms in vagina

20. "Saheli" contraceptive oral pill was developed at:

- a) Department of Biotechnology, New Delhi
- b) CDRI, Lucknow
- c) NEERI, Nagpur
- d) Department of Molecular Biology, Hyderabad

PE