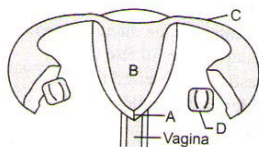


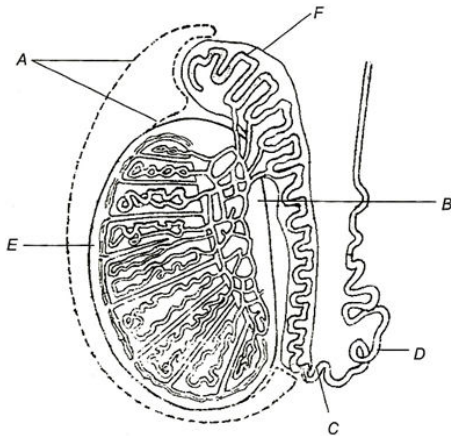
Topic :- Human Reproduction

1. Mark the odd one
a) Acrosome b) Endometrium c) Corpus luteum d) Graafian follicle
2. Name the hormone, which stimulates growth and development of breast in preparation for lactation?
a) Oestrogen b) Human placental lactogen
c) Progesterone d) Chorionic gonadotropin
3. At which stage of the development, ovum is released from the ovary of human female?
a) Primary oocyte b) Oogonium c) Secondary oocyte d) Ootid
4. The 60% of semen is produced by the
a) Prostate gland b) Seminal vesicle c) Cowper's gland d) Testes
5. Choose the correct combination of the labelling for the following structure.



- a) A-Oviduct, B-Uterus, C-Cervix, D-Ovary b) A- Cervix, B-Uterus, C-Ovary, D- Tumor
 - c) A- Uterus, B-Uterus cavity, C-Oviducal funnel, D- Ovary d) A- Cervix, B- Uterine cavity, C-Fallopian tube, D- Ovary
6. Foetus develops limbs and digits in its ... of development
a) 2nd month b) 3rd month c) 4th month d) 5th month
 7. Spermatogenesis is induced by
a) FSH b) ACTH c) ICSH d) ATH

8. Identify A to F in the diagram given below



- a) A-Tunica vaginalis, B-Rete testis, C-Caput epididymis, D-Vas deferens, E-Septa of testis, F-Cauda epididymis
 b) A-vaginalis, B-Rete testis, C- Cauda epididymis, D-Mediastinum testis, E- Vas deferens, F- Caput epididymis
 c) A-Tunica vaginalis, B-Rete testis, C- Cauda epididymis, D-Vas deferens, E-Tunica albuginea, F- Caput epididymis
 d) A-Tunica vaginalis, B-Rete testis, C-Caput epididymis, D- Mediastinum testis, E- Vas deferens, F-Cauda epididymis
9. Sertoli's cells are nourishing cells in the testis. They also secrete a hormone. Identify the same
 a) Gonadotropin b) Testosterone c) Relaxin d) Inhibin
10. Through invagination of which of the following, mesoderm is formed?
 a) Primitive streak b) Inner mass of cell c) Endoderm d) Ectoderm
11. The receptor site of acrosome are exposed and become active to penetrate the egg. This process is called
 a) Activation b) Capitation c) Reactivation d) Deactivation
12. Primary oocyte surrounded by a layer of granulosa cells is called
 a) Secondary follicle b) Ootid c) Primary follicle d) Tertiary follicle
13. In human secretion, which of the following is used to confirm implantation of emryo?
 a) Gastrula b) Trophoblast c) Inner mass of cell d) Blastocyst
14. When both ovaries are removed from rat, which hormone is decreased in blood?
 a) Oxytocin b) Prolactin
 c) Oestrogen d) Gonadotrophic releasing factor

15. Study the following sentences.
I. Testosterone influences the male secondary sexual characters.
II. Gestation period in rabbit is approximately 276 days.
III. Bulbourethral glands secrete a vaginal lubricant.
IV. Placenta secretes oestrogen
Identify the correct statements.
a) I and IV b) II and III c) III and IV d) I and II
16. Secretion from which of the following structures is preparing inner wall of uterus for implantation?
a) Ovary b) Pituitary gland c) Corpus luteum d) Ovarian follicle
17. At the time of implantation, the human embryo is called
a) Embryo b) Blastocyst c) Zygote d) Foetus
18. Vas deferens receives a duct from ...A... and opens into the ...B... as ejaculatory duct.
A and B in above statement is
a) A-vas deferens; B-urinary bladder b) A-seminal vesicles; B-urethra
c) A-urethra; B-seminal vesicles d) A-urethra; B-urinary bladder
19. In humans, dermis of skin, circulatory system and muscles are derived from
a) Mesoderm b) Ectoderm c) Endoderm d) Both (a) and (b)
20. ...A... completely surrounds the embryo and protect it. It also take part in formation ofB... .
A and B here refers to
a) A-Chorion; B-Placenta b) A-Amnion; B-Amniotic cavity
c) A-Allantois; B-Endoderm d) A-Yolk sack; B-Endoderm