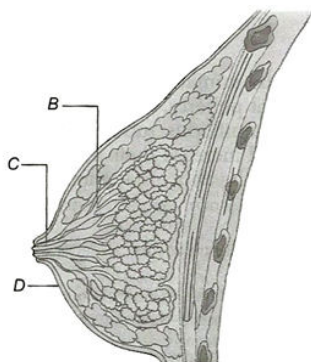


Topic :- Human Reproduction

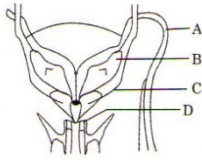
- Relaxin (a hormone) is secreted by
 - Placenta
 - Ovary
 - Anterior lobe of pituitary
 - Posterior lobe of pituitary
- Leydig cells secrete hormone
 - Testosterone
 - Inhibin
 - Oxytocin
 - FSH
- Which of the following is correct about mammalian testes?
 - Graafian follicles, Sertoli's cells, Leydig's cells
 - Graafian follicles, Sertoli's cells, seminiferous tubules
 - Sertoli's cells, seminiferous tubules, Leydig's cells
 - Graafian follicles, Leydig's cells, seminiferous tubules
- Given the diagrammatic sectional view of mammary gland. Identify A, B, C and D



- A-Alveolus, B-Mammary duct, C-Lactiferous duct, D-Areola
 - A-Alveolus, B- Lactiferous duct, C- Mammary duct, D-Areola
 - A-Alveolus, B-Mammary duct, C-Lactiferous duct, D-Lactogenic spot
 - A- Mammary gland, B-Mammary duct, C- Lactiferous duct, D-Areola
- During oogenesis, the small structure separated from egg is
 - Polar bodies
 - Secondary endosperm
 - Herring bodies
 - Hela cells
 - Structure connecting the foetus to placenta is
 - Umbilical cord
 - Amnion
 - Yolk sac
 - Chorion

7. Sperm is a microscopic structure composed of head, neck, ...A... and ...B... Sperm head contains elongated haploid nucleus, which is covered by cap like structure called ...C... .
A, B and C in the above statement refers to
a) A-middle piece, B-tail, C-acrosome
b) A- tail, B- middle piece, C-acrosome
c) A- tail, B- acrosome, C- middle piece
d) A-middle piece, B- acrosome, C- tail
8. Which part of the sperm is motile?
a) Head b) Neck c) Middle d) Tail
9. Cytoplasm of ovum does not contain
a) Golgi complex b) Centrosomes c) Mitochondria d) Ribosomes
10. Appearance of hair on head is observed during of development
a) 2nd month b) 3rd month c) 4th month d) 5th month
11. A. Humans reproduces.....
B. Humans are.....
C. Fertilization is in humans
D. Male and female gametes are.....
E. Zygote is.....
F. The process of release of ovum from a mature follicle is called.....
G. Ovulation is induced by a hormone called.....
H. The fusion of male and female gametes is called.....
I. Zygote divides to form... which is implanted in uterus
J. The structure which provides vascular connection between foetus and uterus is called.....
Blanks in the statements A to J in the above statement is
a) A-asexually, B-viviparous, C-external, D-diploid, E-haploid, F-ovulation, G-LH, H-fertilisation, I-blastocyst, J-placenta
b) A-sexually, B-viviparous, C-external, D- haploid, E- diploid, F-ovulation, G-LH, H-fertilisation, I-blastocyst, J-placenta
c) A-asexually, B-viviparous, C-internal, D- haploid, E- diploid, F-ovulation, G-LH, H-fertilisation, I-blastocyst, J-placenta
d) A-sexually, B-viviparous, C-internal, D- haploid, E- diploid, F-ovulation, G-LH, H-fertilisation, I-blastocyst, J-placenta

12. Given below is a diagrammatic sketch of a portion of human male reproductive system. Select the correct set of the names of the parts labelled A, B, C, D.

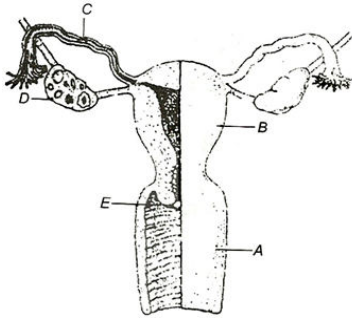


	A	B	C	D
a)	Ureter	prostate	seminal vesicle	bulbourethral gland
c)	Vas deferens	seminal vesicle	bulbourethral gland	prostate

b)	Vas deferens	Seminal vesicle	prostate	bulbourethral gland
d)	Ureter	seminal vesicle	prostate	bulbourethral gland

13. Blastopore is found in
- a) Blastula and is opening of archenteron
 b) Blastula and is opening of blastocoels
 c) Gastrula and is opening of archenteron
 d) Gastrula and is opening of blastocoels
14. Seminal vesicle secretes 60% of semen content, these contents are
- a) Glucose, prostaglandin, clotting protein
 b) Cellulose, prostaglandin, clotting factor
 c) Fructose, prostaglandin, clotting protein
 d) Glyceraldehyde 3-phosphate, prostaglandin, clotting factor
15. A sectional view of mammary gland shows
- I. Nipple areola
 II. Mammary lobes (alveolus) and duct
 III. Antibody and ribs
 IV. Ampulla and lactiferous duct
- Choose the correct option from the above
- a) I, II, IV
 b) I, II, III
 c) III, IV, II
 d) I, IV, III
16. The Bartholin glands of female resembles the male's
- a) Cowper's gland
 b) Vestibular gland
 c) Seminal vesicles
 d) Prostate gland
17. Cleavage in frog's zygote is
- a) Diploblastic
 b) Heteroblastic
 c) Holoblastic
 d) Meroblastic
18. Post-embryonic period is also called
- a) Prenatal
 b) Postnatal
 c) Embryonal period
 d) None of the above

19. Match each function below with its associated part (or parts) of the human female reproductive system shown in the figure



- I. Where is the egg produced?
- II. Where does fertilization occur?
- III. Where would implantation of a fertilized egg take place?
- IV. Where are oestrogen and progesterone produced?
- V. What part receives the penis during copulation?

- a) I-D, II-C, III-B, IV-E, V-A
 c) I-D, II-C, III-B, IV-D, V-A

- b) I-D, II-C, III-B, IV-A, V-E
 d) I-E, II-C, III-B, IV-D, V-A

20. Spermatogenesis starts at puberty due to

a) GnRH

b) Lactin

c) Testosterone

d) Oestrogen

PE