

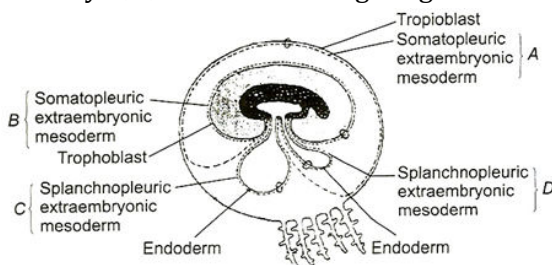
Class : XII<sup>th</sup>  
Date :

Subject : BIOLOGY  
DPP No. : 6

## Topic :- Human Reproduction

- Which cells come earliest in the sequence of sperm production?  
a) Spermatozoa                      b) Spermatocyte                      c) Spermatid                      d) Spermatogonia
- Superficial meroblastic cleavage occurs in  
a) Reptiles                      b) Birds                      c) Mammals                      d) Insects
- Which of the following is viviparous?  
a) Running birds                      b) Whales                      c) Bats                      d) Both (b) and (c)
- The dominant hormone controlling the proliferative phase of the uterine endometrium is  
a) Oestrogen                      b) FSH                      c) LH                      d) Progesterone
- Test tube baby means a baby born when  
a) The ovum is fertilized externally and thereafter implanted in the uterus  
b) It develops from a non-fertilized egg  
c) It is developed in a test tube  
d) It is developed through tissue culture method
- Withdrawal of which of the following hormones is the immediate cause of menstruation?  
a) Oestrogen                      b) FSH                      c) FSH-RH                      d) Progesterone
- Fertilization takes place in  
a) Cervix  
b) Isthmus  
c) Ampullary isthmic junction  
d) Follicle
- In telolecithal egg  
a) Yolk is present in the centre                      b) Yolk is unevenly distributed  
c) Yolk is absent                      d) Yolk is present all over the ovum
- Which hormone is produced throughout the menstrual cycle?  
a) FSH                      b) Oestrogen                      c) LH                      d) Progesterone

10. Accessory sexual character in female is promoted by  
 a) Androgen                      b) Progesterone                      c) Oestrogen                      d) Testosterone
11. Uterine endometrium, epithelial glands and connective tissue are broken in menstrual phase. This is due to  
 a) Over secretion of FSH                      b) Lack of oestrogen  
 c) Lack of progesterone                      d) Over production of progesterone
12. Which one of the following statements is incorrect about menstruation?  
 a) During normal menstruation about 40 mL blood is lost  
 b) The menstrual fluid can easily clot  
 c) At menopause in the female, there is especially abrupt increase in gonadotropic hormones  
 d) The beginning of the cycle of menstruation is called menarche
13. Ovulatory phase lasts for  
 a) 1 day                      b) 2 days                      c) 3 days                      d) 4 days
14. In the beginning of menstruation what will happen?  
 a) Ovulation takes place  
 b) Corpus luteum degenerates  
 c) Levels of LH and FSH increases  
 d) Progesterone and oestrogen land increase
15. Type of cell division taking place at I, II and III stages of previous question are  
 a) I-meiosis, II-mitosis, III-mitosis-II  
 b) I- mitosis, II-mitosis, III- meiosis  
 c) I-meiosis-I, II- meiosis-II, III-mitosis  
 d) I- mitosis, II-mitosis-I, III- meiosis –II
16. Fusion of dissimilar gametes is known as  
 a) Fertilization                      b) Dichogamy                      c) Autogamy                      d) Allogamy
17. Identify *A, B, C* and *D* in the figure given below



- a) A-Yolk sac, B-Amnion, C-Allantois, D-Chorion  
 b) A-Chorion, B-Amnion, C- Yolk sac, D- Allantois  
 c) A-Chorion, B-Amnion, C-Allantois, D- Yolk sac  
 d) A-Chorion, B- Allantois, C- Amnion, D- Yolk sac

18. At the time of birth, the oocyte have the stage  
a) Prophase-I                      b) Prophase-II                      c) Meiosis-II                      d) Mitosis
19. Vaginal orifice, urethral orifice are open in  
a) Vulva                              b) Labia majora                      c) Labia minora                      d) Cervix
20. The extra-embryonic membranes of mammalian embryo are derived from  
a) Trophoblast                      b) Follicle cells                      c) Formative cells                      d) Inner cell mass

PE