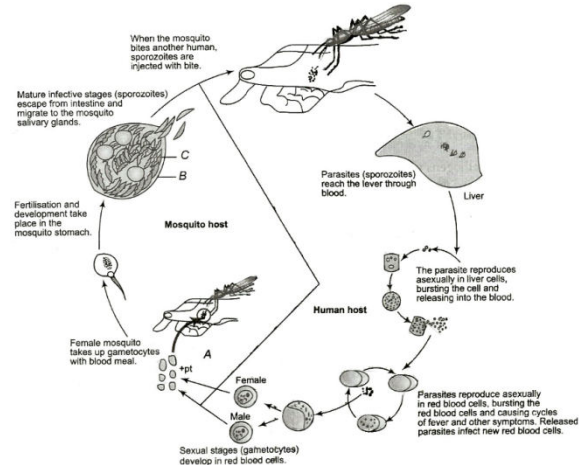


Topic :- Human Health & disease

- Smoking causes
a) Heart disease b) Gastric ulcer c) Bronchitis d) All of these
- A person is suffering from frequent episodes of nasal discharge, nasal congestion, reddening of eyes and watery eyes. These are the symptoms of
a) Cyanosis b) Bronchitis
c) Rhinitis d) Bronchial carcinoma
- Which of the following is a viral disease?
a) Typhoid b) Polio c) TB d) Leprosy
- Immunodeficiency makes a person highly susceptible to infection. It is caused by
a) Lack of B-cells b) Lack of T-cells c) Both (a) and (b) d) None of the above
- The causative agent of filaria is
a) *Wuchereria bancrofti*
b) *Leishmania donovani*
c) *Plasmodium vivax*
d) *Trypanosoma gambiens*
- Chemical carcinogens present in smoke have been identified as a major cause of
a) Lung cancer b) Liver cancer c) Oral cancer d) None of these
- The cancer of the epithelial cells is called
a) Leukaemia b) Lipoma c) Sarcoma d) Carcinoma
- Cell-mediated immunity is responsible for
a) Graft rejection b) Passive immunity c) Organ surgery d) Innate immunity
- Physiological barrier which prevents entry of microorganism in our body is/are
a) Acid in the stomach b) Saliva in the mouth c) Tears from eyes d) All of these

10. Antiviral substances, produced by many vertebrates in response to viral infections for resisting the multiplication of viruses as known as
- Viroid
 - Interferon
 - Antivirin
 - Antigen

11. Study the given diagram and name the labelled A,B and C



- A-Gametocytes, B-Salivary glands, C-Sporozoites
- A-Sporozoites, B-Salivary glands, C-Gametocytes
- A-Salivary glands, B-Sporozoites, C-Gametocytes
- A-Salivary glands, B-Gametocytes, C-Sporozoites

12. Who developed vaccine against smallpox?

- Lousi Pasteur
- Selman Waksman
- Edward Jenner
- Alexander Flemming

13. The main reason, why antibiotics could not solve all the problems of bacterial disease, is

- Inactivation of antibiotics by bacterial enzyme
- Decreased efficiency of the immune system
- The development of mutant strains resistant to antibiotics
- Insensitivity of the individual following long exposure to antibiotics

14. ELISA assay

- Use complement mediated cells lysis
- User a radiobelled second antibody
- Involves addition of substrate which is converted into coloured end product
- Requires red blood cells

15. Cross sectional image of internal body structure can be obtained by using which medical technique?

- ECG - Electro Cardio Graph
- EEG - Electro Encephalo Graph
- CAT - Computerized Axial Tomography
- PET - Positron Emission Tomography

16. Communicable disease means
a) The disease transmitted from man to man b) The disease caused by biological agents
c) Both (a) and (b) d) Present from birth or inherited
17. The infectious form (after entering into human blood) of malarial parasite migrate to the
a) Erythrocytes of human b) Liver cells of human
c) Stomach of mosquito d) Salivary gland of mosquito
18. *Entamoeba histolytica* is a
a) Viral parasite b) Bacterial parasite c) Protozoan parasite d) Fungal parasite
19. Virus-infected cells secrete proteins called
a) Enzyme b) Interferon c) Hormone d) Antibody
20. World health organization has started a number of programmes to prevent spreading of HIV infection
Few such steps include
I. ensuring use of disposable needles and syringes
II. free distribution of condoms
III. advocating safe sex
IV. controlling drug abuse
Which of the steps given above are correct?
a) I and II b) III and IV c) II, III and IV d) I, II, III and IV

