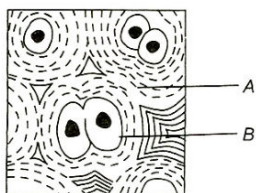


Class : XIth
Date :

Subject : BIOLOGY
DPP No. : 8

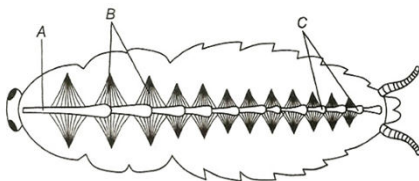
Topic :- Structural Organisation in Animals

- Carefully read the given statements about neurons and neuroglial cells of nervous tissue
I. Neuroglial make up more than one-half volume of the neural tissue in our body
II. Neuroglial cells protects and support the neurons
III. Axon and dendrons are the part of neurons
IV. When neuron is suitably stimulated, an electrical disturbance is generated, which travels along its cytoplasm
Choose the correct statements form above given option
a) I and II b) Only II c) III and IV d) Only IV
- The abdomen of both male and female cockroaches consists of
a) 9 segments b) 7 segments c) 10 segments d) 12 segments
- Lymphocytes are formed by
a) Plasma cells b) Mast cells c) Liver cells d) None of these
- Which among the following is not a characteristic of yellow fibres of connective tissue?
a) Presence of elastin b) Fewer in number
c) Straight and branched d) Provide toughness and strength
- In earthworm, a single female genital pore is present in the mid-ventral line of the segment number
a) 14 th b) 16 th c) 15 th d) 17 th
- In the given diagram of T.S. cartilage, identify *A* and *B*



- a) A-Collagen; B-Chondrocyte b) A-Osteocyte; B-Collagen
c) A-Microtubule; B-Osteocyte d) A-Chondrocyte; B-Collagen

7. Which of the following statements are incorrect regarding ciliated epithelium?
- Cells possess cilia on their free surface
 - They bear microvilli at the free ends to increase surface area of the organ
 - Mucous spreads over the epithelium as a thin layer
 - It is found in the lining of the small intestine
- a) I and III b) I and II c) II and IV d) III and IV
8. Which of the following helps in blood coagulation?
- a) Leucocytes b) Monocytes c) Lymphocytes d) Thrombocytes
9. The entire body of cockroach is covered by
- a) Skin b) Shell
c) Hard chitinous exoskeleton d) Keratin
10. The contractile tissue that is present only in the heart is
- a) Cardiac tissue b) Areolar tissue c) Adipose tissue d) All of these
11. The skin of frog is slippery and smooth due to the presence of
- a) Mucous b) Gelatin c) Waxy skin d) Mucilage
12. During aestivation and hibernation of frog gaseous exchange takes place through the
- a) Skin b) Nose c) Lungs d) Scales
13. Which of the following segments in the earthworm's body are having no setae?
- a) First b) Last c) Clitellum d) All of these
14. Achilles tendon is associated with
- a) Gluteus muscle b) Hamstring muscle
c) Quadriceps muscle d) Gastrocnemius muscle
15. Given below the figure of open circulatory system of cockroach. Identify *A*, *B* and *C* choose the correct options



- a) A-Lateral aorta, B-Ciliary muscles, C-Chambers of heart
b) A-Internal aorta, B-Alary muscles, C-Chambers of heart
c) A-Anterior aorta, B-Alary muscles, C-Chambers of heart
d) A-Posterior aorta, B-Fibrous muscles, C-Chambers of heart

16. Which of the following is the characteristic feature of the earthworm?
a) Aquatic b) Cave dwellers c) Burrowing d) Nest making
17. Which among the following glands is known as ductless gland?
a) Salivary glands b) Endocrine glands c) Exocrine glands d) None of the above
18. Which of the following is the function of spermathecae in the earthworm
a) They receives eggs during copulation
b) They receives and store spermatozoa during copulation
c) It helps in the formation of sperms
d) It receives spermatogonia for maturation
19. In the exoskeleton of the cockroach, sclerites are joined to each other by
a) Ossicles b) Arthroial membrane c) Amino acids d) Chitin
20. Choose the incorrect statement about skeletal muscles
I. Tissues are closely attached to bones
II. A sheath of tough connective tissue encloses several bundles of muscles fibres
III. These are involuntary in their action
IV. These are present in the blood vessels
a) I and II b) II and III c) III and IV d) I and IV

PE