

Class : XI<sup>th</sup>  
Date :

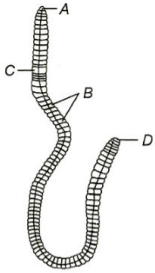
Subject : BIOLOGY  
DPP No. : 6

## Topic :- Structural Organisation in Animals

- Which of the following statements is associated with epithelium?
  - Cells are compactly packed with little intercellular matrix
  - Cells are loosely packed with large intercellular matrix
  - It is highly vascularised
  - It is a supporting tissue
- The common Indian earthworm are
  - Pheretima* and *Tigrina*
  - Pheretima* and *Hirudo*
  - Pheretima* and *Terrestris*
  - Pheretima* and *Lumbricus*
- The vascular system of the frog is
  - Open type
  - Closed type
  - Double circulatory
  - Portal
- Ductless glands in human beings produces
  - Saliva
  - Bile
  - Hormones
  - Mucous
- Read the given statements about blood vascular system of cockroach
  - Circulatory system of cockroach is of closed type
  - It contains no blood vessels except aorta heart
  - Heart is 6 chambered
  - The haemolymph is composed of colourless plasma and haemocytesWhich of the statements given above is/are incorrect
  - Only I
  - I, II and III
  - I and III
  - Only IV
- Which statement is correct about simple cuboidal epithelium?
  - It consists of a single layer of cube-like cells
  - It is commonly found in ducts of glands
  - Its main function is secretion and absorption
  - All of the above
- In a frog's body, which of the following is the largest gland?
  - Liver
  - Pancreas
  - Gall bladder
  - Stomach

8. Tendons and ligaments are  
a) Epithelial tissue  
b) Fibrous connective tissue  
c) Nerve tissue  
d) Muscular tissue
9. Read the given statements reference to the digestive system of cockroach  
I. Alimentary canal is divided into three regions  
II. Oesophagus opens into a sac like structure called crop  
III. The hind gut is broader than mid gut  
IV. The rectum opens through the anus  
Which of the statements given above is/are incorrect?  
a) I and IV  
b) II and III  
c) III and IV  
d) None of the above
10. The study of internal structure of an organism as revealed by dissection is known as  
a) Morphology  
b) Anatomy  
c) Internal appearance  
d) Physiology
11. On the basis of structures and functions animal tissues are classified into  
a) 3 types  
b) 2 types  
c) 1 type  
d) 4 types
12. The columnar epithelium in human body is found in  
a) Stomach  
b) Lungs  
c) Kidney  
d) Fallopian tube
13. Earthworm feeds upon  
a) Small animals  
b) Small plants  
c) Organic matter and decaying leaves  
d) All of the above
14. If a live earthworm is pricked with a needle on its other surface without damaging its gut, the fluid that may come out is  
a) Slimy mucous  
b) Excretory fluid  
c) Coelomic fluid  
d) Haemolymph
15. In frog, the blood from the heart is carried to all part of the body by  
a) Arteries  
b) Veins  
c) Vena cava  
d) Venules
16. Which of the following is the most abundant component of the human blood?  
a) RBCs  
b) Sodium ( $\text{Na}^+$ )  
c) Blood platelets  
d) Cholesterol
17. From earthworm, two pairs of testes are present in the segments  
a) 10th-11th  
b) 11th-12th  
c) 12th-13th  
d) 13th-14<sup>th</sup>
18. Which one of the following leucocytes transforms into macrophages?  
a) Eosinophil  
b) Basophil  
c) Monocytes  
d) Lymphocyte

19. Identify *A*, *B*, *C* and *D* in the given figure of dorsal view of earthworm's body and choose the correct combination of option given below



- a) A-setae, B-Clitellum, C-Genital papillae, D-Anus  
b) A-Peristomium, B-Cilium, C-Male genital aperture, D-Base  
c) A-Prostomium, B-Metameres, C-Clitellum, D-Anus  
d) A-Annuli, B-Grooves, C-Metameres, D-Anus
20. Which of the following statements are incorrect in reference to the blood vascular system of the earthworm?
- I. Blood vascular system is of open type  
II. Smaller blood vessels supply the gut, nerve cord and the body wall  
III. Blood glands are present on 6th 7th and 8th segment  
IV. Blood cells are phagocytotic in nature
- a) Only I                      b) I and IV                      c) I and III                      d) II and III