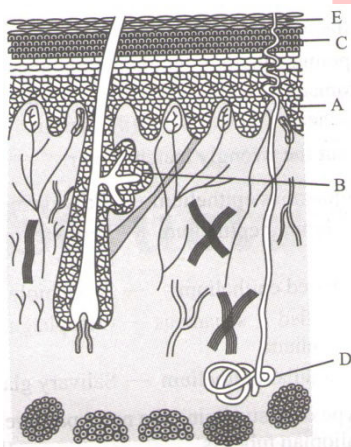


Class : XI<sup>th</sup>  
Date :

Subject : BIOLOGY  
DPP No. : 5

## Topic :- Structural Organisation in Animals

- The largest tergal part in cockroach is  
a) Mesonotum                      b) Metanotum                      c) Pronotum                      d) Plurae
- Which of the following epithelium is composed of single layer of tall and slender cells?  
a) Cuboidal epithelium  
b) Columnar epithelium  
c) Ciliated epithelium  
d) Glandular epithelium
- In the diagram given below, parts labeled as 'A', 'B', 'C', 'D' and 'E' respectively represent



- |                                 |                                 |
|---------------------------------|---------------------------------|
| a) A      Stratum granulosum,   | b) A      Stratum granulosum,   |
| B      Sweat gland,             | B      Sebaceous gland,         |
| C      Stratum germinativum,    | C      Stratum germinativum,    |
| D      Sebaceous gland,         | D      Sweat gland,             |
| E      Stratum corneum          | E      Stratum corneum          |
| c) A      Stratum germinativum, | d) A      Stratum germinativum, |
| B      Sweat gland,             | B      Sebaceous gland,         |
| C      Stratum lucidum,         | C      Stratum lucidum,         |
| D      Sebaceous gland,         | D      Sweat gland,             |
| E      Stratum corneum          | E      Stratum corneum,         |
- Universal blood recipient is  
a) Blood group-O                      b) Blood group-AB                      c) Blood group -A                      d) Blood group-B

5. Which of the following statement is/are correct in relation with epithelial tissue?  
 I. It helps in protection and storage  
 II. It helps in excretion and reproduction  
 III. It helps in absorption and secretion  
 IV. It helps in locomotion  
 a) Only IV                      b) Only II                      c) All except IV                      d) All except III
6. The blubber is formed by  
 a) Elastic tissue                      b) Reticular tissue                      c) Adipose tissue                      d) Fibrous tissue
7. With the help of the following, identify the correct sequence, that leads to the formation of blood clot  
 I. Blood clot    II. Injury  
 III. Factor II    IV. Factor III  
 V. Factor IV    VI. Fibrinogen  
 VIII. Thorambin  
 a) II→III→IV→VI→VII→I                      b) II→III→VII→VI→I<sup>Fl</sup>→IV↑e<sup>+←e</sup>  
 c) IV→II→III→VII→VI→I↑e<sup>+</sup>                      d) II→IV→III→VI→VII→I↑e<sup>+</sup>
8. In frog, a solid muscular organ situated in the upper part of the body cavity is  
 a) Heart                      b) Intestine                      c) Lungs                      d) Kidney
9. The dorsal surface of the earthworm's body is marked by  
 a) Genital pores                      b) Mouth                      c) Heart                      d) Blood vessel
10. Erythropoiesis starts in  
 a) Kidney                      b) Liver                      c) Spleen                      d) Red bone marrow
11. The most active phagocytic white blood cells are  
 a) Neutrophils and eosinophils                      b) Lymphocytes and macrophages  
 c) Eosinophils and lymphocytes                      d) Neutrophils and monocytes
12. Cingulum of the earthworm is concerned with  
 a) Copulation                      b) Burrowing                      c) Cocoon formation                      d) Spermatogenesis
13. Tendons and ligaments are specialized types of  
 a) Nervous tissue                      b) Muscular tissue                      c) Epithelial tissue                      d) Connective tissue
14. Which of the following has a triple helix structure?  
 a) Haemoglobin                      b) Keratin                      c) Lysozyme                      d) Collagen
15. The first segment of earthworm's body, which contains mouth is called  
 a) Prostomium                      b) Peristomium                      c) Coelom                      d) Protractor

16. You are required to draw blood from patient and to keep it in a test tube for analysis of blood corpuscles and plasma. You are also provided with the following four types of test tubes, which of them will you not use for the purpose?
- a) Test tube containing calcium bicarbonate                      b) Chilled test tube  
c) Test tube containing heparin    d) Test tube containing sodium oxalate
17. In which of the following tissue preparations, signet ring appearance is obtained?
- a) Epithelial tissue    b) Dense connective tissue  
c) Adipose tissue    d) Reticular tissue
18. Tissue is
- a) A group of similar cells together with their associated cell intercellular substances which perform a specific function  
b) A single cell with specified functions  
c) Composed of a single layer with cube-like cells  
d) None of the above
19. The alimentary canal of frog is short because frogs are
- a) Herbivores                      b) Carnivores                      c) Omnivores                      d) Heterotrophs
20. Which of the following exhibits sexual dimorphism?
- a) Frogs                      b) Leech                      c) Earthworm                      d) Butterfly

