

DPP

DAILY PRACTICE PROBLEMS

Class : XIth
Date :

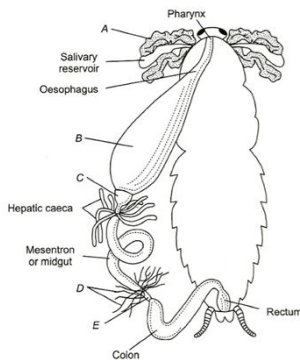
Subject : BIOLOGY
DPP No. : 4

Topic :- Structural Organisation in Animals

- Numerous minute pores opens on the surface of the body of earthworm are called
a) Setae b) Nephridiopores c) Spermatospore d) None of the above
- The in frog acts as a chemical messenger which controls and coordinate the functioning of various organs of the body
a) Blood b) Hormones c) Plasma d) Haemoglobin
- Blood is a kind of
a) Areolar tissue b) Connective tissue
c) Fluid connective tissue d) Reticular connective tissue
- Which of the following cell is rounded and biconcave in shape?
a) WBCs b) RBCs c) Epithelial cells d) Nerve cells
- During the process of blood coagulation, vitamin-K helps in the
a) Formation of thromboplastin b) Formation of prothrombin
c) Conversion of prothrombin to thrombin d) Conversion of fibrinogen to fibrin
- During blood clotting, which of the following is used?
a) Co b) Ca⁺ c) Na⁺ d) Cl⁻
- pair of spermathecae are located insegments of earthworm
a) Two, 7th-8th b) Three, 9th-11th c) Four, 6th-9th d) One, 3th-5th
- Adipose tissue is a type of
a) Loose connective tissue b) Dense connective tissue
c) Specialised connective tissue d) None of the above
- Blood platelets are found only in the blood of
a) Birds b) Reptiles c) Mammals d) Amphibians
- Fibroblasts, macrophages and mast cells are present in
a) Cartilage tissue b) Adipose tissue
c) Areolar tissue d) Glandular epithelium

11. During respiration in frog, the hyoid and floor of the buccal cavity are raised with the help of
 a) Sternohyal muscles b) Petrohyal muscles c) Ligaments d) Intercoastal muscles
12. Bones are made up of
 a) Magnesium phosphate b) Sodium chloride
 c) Calcium phosphate d) Phosphorus
13. In frog, microvilli is present in
 a) Intestine b) Stomach c) Oesophagus d) Buccal cavity
14. Vagina, oesophagus and urethra contain which type of tissue?
 a) Stratified squamous epithelium b) Simple squamous epithelium
 c) Ciliated epithelium d) Columnar epithelium
15. Collagen is a
 a) Phosphoprotein b) Globulin c) Derived protein d) Scleroprotein
16. Goblet cells of alimentary canal are a type of
 a) Intercellular gland b) Multicellular gland c) Unicellular gland d) None of these

17. Given below the figure of alimentary canal of cockroach. Identify A to E and choose the correct combination of A to E/A to F



- a) A-Salivary gland, B-Gizzard, C-Crop, D-Villi, E-Caecum
 b) A-Salivary gland, C-Crop, B-Gizzard, D-Malpighian tubules, E-Ileum
 c) A-Salivary gland, B-Gizzard, D-Malpighian tubule, D-Cilia, E-Ileum
 d) A-Salivary gland, C-Crop, D-Malpighian tubule, B-Gizzard, E-Ileum
18. Urinary bladder is..... in frogs
 a) Mutilobed b) Absent c) Unilobed d) Bilobed
19. The number of teeth in the lower jaw of frog is
 a) Two b) Four c) Three d) None of these

20. Pseudostratified epithelium is found in
a) Pharynx

b) Trachea

c) Testis

d) Epidermis

P E