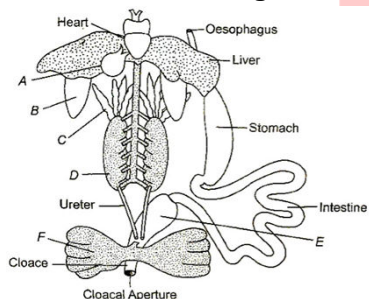


Class : XIth
Date :

Subject : BIOLOGY
DPP No. : 10

Topic :- Structural Organisation in Animals

- Lymphoid tissue is found in
a) Thymus b) Tonsils c) Lymph nodes d) All of these
- Earthworm lives in the burrows made by boring and swallowing the soil to
a) Uptake food b) Get moisture c) Procreation d) Avoid opponents
- Which of the following cells are round and biconcave in shape?
a) White blood cells b) Red blood cells
c) Columnar epithelial cells d) Nerve cells
- Given below the diagram of internal organs of frog and identify A to F



- A-Gall bladder, B-Lungs, C-Testis, D-Kidney, E-Urethra, F-Urinary bladder
 - A-Gall bladder, B-Lungs, C-Fat bodies, D-Kidney, E-Rectum, F-Urinary bladder
 - A-Gall bladder, B-Lungs, C-Ovary, D-Kidney, E-Ileum, F-Urinary bladder
 - A-Gall bladder, B-Lungs, C-Fat bodies, D-Kidney, E-Colon, F-Urinary bladder
- The clitellum divides the body of earthworm into regions
a) 3 b) 2 c) 4 d) 5
 - Identify A, B and C in the given diagram of adipose tissue



- A-Cytoplasm, B-Nucleus, C-Cell wall

- b) A-Fat storage area, B-Mast cell, C-Plasma membrane
 c) A-Cell fluid, B-Collagen fibres, C-Plasmalemma
 d) A-Fat storage area, B-Nucleus, C-Plasma membrane
7. How many litres of blood is present in normal human body?
 a) 6.8 L b) 6.0 L c) 5.9 L d) 7.2 L
8. Lining of body cavities, ducts and tube are made up of
 a) Compound epithelium b) Simple epithelium
 c) Cuboidal epithelium d) Keratinised epithelium
9. Which of the following metalloprotein is found in the blood of earthworm?
 a) Haemoglobin b) Hemerytherin c) Hemocyanin d) Myoglobin
10. Histamine, serotonin and heparin are secreted by
 a) Lymphocytes b) Monocytes c) Neutrophils d) Basophils
11. Find out the wrongly matched pair.
 a) Squamous epithelium - Skin of frog
 b) Columnar epithelium - Peritoneum of body cavity
 c) Ciliated epithelium - Bronchioles
 d) Stratified squamous epithelium - Oesophagus
12. The body wall of the earthworm is covered by which of the following layers (externally-internally)?
 a) Epidermis, cuticle, coelomic epithelium, longitudinal muscle, circular muscles
 b) Cuticle, epidermis, circular muscles, coelomic epithelium, longitudinal muscle
 c) Non-cellular cuticle, epidermis, circular muscles, longitudinal muscles, coelomic epithelium
 d) Coelomic epithelium, epidermis, cuticle, circular muscles, longitudinal muscles
13. The number of pairs of cranial nerves arising from the brain of frog is
 a) 10 b) 9 c) 8 d) 7
14. The ova of the earthworms are fertilised by the sperm within the
 a) Cocoon b) Seminal vesicles c) Soil d) None of the above
15. Which of the following tissues provides a covering layer for some of the body parts?
 a) Connective tissues b) Muscular tissues
 c) Epithelial tissues d) Neural tissues

16. Consider the following statements about the connective tissue
- I. Their special function is linking and supporting the other organs tissue of the body
 - II. It is the most abundant type of animal tissue
 - III. Blood is a specialised connective tissue which contains collagen
 - IV. The cells of connective tissue secretes mucous
- Which of the statement given above are incorrect?
- a) I and II b) II and III c) III and IV d) I, II, III and IV
17. Which of the following type of connective tissue is present at the tip of human nose?
- a) Cartilage b) Bone c) Adipose tissue d) None of these
18. The tissue which forms the glands in humans is
- a) Muscular tissue b) Nervous tissue c) Epithelium tissue d) Connective tissue
19. How many species of *Pheretima* are found all over the world?
- a) 200 b) 300 c) 400 d) 500
20. In which of the following segments of earthworm, septal nephridia is present?
- a) 15-last b) 8-15 c) 18-last d) 15-17

PE