

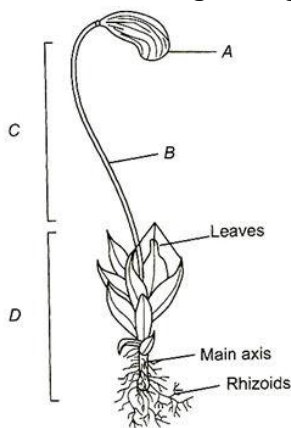
Class : XIth
Date :

Subject : BIOLOGY
DPP No. : 7

Topic :- Plant Kingdom

- Phylogenetic system of classification was given by
a) Engler and Prantl b) Aristotle c) Linnaeus d) Bentham and Hooker
- Which was first photosynthetic organism?
a) Green algae b) Red algae c) Cyanobacteria d) None of these
- Male and female gametophytes are independent and free-living in
a) Mustard b) Castor c) *Pinus* d) *Sphagnum*
- Chlamydomonas*, *Volvox*, *Ulothrix*, *Spirogyra* and *Chara* are the examples of
a) Class-Chlorophyceae (green algae)
b) Class-Phaeophyceae (brown algae)
c) Class-Rhodophyceae (red algae)
d) Class-Cyanophyceae (blue-green algae) and Chlorophyceae
- Consider the following statements
I. Agar, one of the commercial products obtained from *Gelidium* and *Gracilaria* are used to grow microbes and in preparations of ice-creams and jellies
II. *Chlorella* and *Spirogyra* are used in sewage disposal ponds
III. Some species of marine algae like *Porphyra*, *Laminaria* and *Sargassum* are used as food
Which of the statements given above are correct?
a) I and II b) I and III c) II and III d) I, II and III
- In gymnosperm, the multicellular female gametophyte is retained with in
a) Microsporangium b) Megasporangium c) Male gametophyte d) Archegonia
- Choose the wrong pair
a) Hepaticopsida - *Marchantia* b) Lycopsida - *Selaginella*
c) Bryopsida - *Anthoceros* d) Pteropsida - *Dryopteris*
- Cycas circinalis* is a source of
a) Resin b) Timber c) Essential oil d) Starch

9. The endosperm in angiosperms develops from
 a) Zygote
 b) Secondary nucleus
 c) Chalazal polar nucleus
 d) Micropylar polar nucleus
10. A microsporophyll in *Pinus* has
 a) One microsporangium on the adaxial side
 b) One microsporangium on the abaxial side
 c) Two microsporangia on the abaxial side
 d) Two microsporangia on the adaxial side
11. The algae used in space research is
 a) *Cephaleuros*
 b) *Gelidium*
 c) *Chlorella*
 d) *Gracilaria*
12. Horse tails and ferns are belongs to
 a) Gymnosperms
 b) Bryophytes
 c) Mosses
 d) Pteridophytes
13. Chloroplasts, with pyrenoid like structures are found in the leaves of
 a) *Funaria*
 b) *Cycas*
 c) *Selaginella*
 d) *Zea mays*
14. Bryophytes mostly occur in
 a) Dry area
 b) Terrestrial area
 c) Humid, damp and shaded localities
 d) in water
15. The number of prothallial cells in male gametophyte of *Pinus* is
 a) 2
 b) 1
 c) 3
 d) 0
16. *A, B, C* and *D* in given figure represents



- a) A-Apophysis, B-Capsule, C-Sporophyte, D-Gametophyte
 b) A-Capsule, B-Seta, C-Sporophyte, D-Gametophyte
 c) A-Apophysis, B-Seta, C-Gametophyte, D-Sporophyte
 d) A-Apophysis, B-Capsule, C-Gametophyte, D-Sporophyte
17. The body structure of green algae may be
 a) Colonial
 b) Unicellular
 c) Filamentous
 d) All of these

18. Which of the following gymnospermic coralloid roots are associated with N_2 -fixing cyanobacteria?
a) *Pinus* b) *Cycas* c) *Cedrus* d) *Ginkgo*
19. Natural system of classification was developed by
a) Linnaeus
b) Engler and Prantl
c) Bentham and Hooker
d) Aristotle
20. Angiosperms differ from gymnosperms in having
a) Fruits b) Cotyledon c) Tracheids d) Broad leaves

PE