

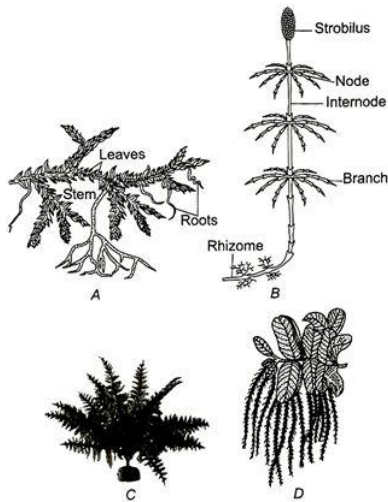
Class : XI<sup>th</sup>  
Date :

Subject : BIOLOGY  
DPP No. : 6

## Topic :- Plant Kingdom

- While entering in the neck of a fern archegonium, sperms shows  
a) Phototaxy                      b) Chemotaxy                      c) Thermotaxy                      d) Cyclosis
- Which one of the following plants is monoecious?  
a) *Marchantia*                      b) *Pinus*                      c) *Cycas*                      d) Papaya
- A gymnospermic leaf carries 16 chromosomes. The number of chromosomes in its endosperm is  
a) 24                      b) 16                      c) 12                      d) 8
- Tea and coffee are affected by  
a) *Phytophthora*                      b) *Cephaleuros*                      c) *Hervilla*                      d) *Albugo candida*
- Which of the following groups of algae do not have eukaryotic organization?  
a) Green algae                      b) Blue-green algae                      c) Red algae                      d) Golden-brown algae
- In gymnosperms, during pollination pollen grains are released from the microsporangium and transferred to  
a) Opening of the ovule                      b) Archegonia  
c) Ovary                      d) Stigma
- In *Funaria*, the stomata are found on  
a) Foot                      b) Seta                      c) Capsule                      d) All of these
- Diatoms belong to which class?  
a) Phaeophyceae                      b) Bacillariophyceae                      c) Chlorophyceae                      d) Xanthophyceae
- Which of the following statement is correct about the gametophytic stage in the alteration of generation with in the life cycle?  
a) Generation that produces the gametes                      b) Generation that produces the spores  
c) Generation that produces vascular tissue                      d) The diploid generation

10. Go through the following figures and identify these plants (A, B, C and D)



- a) A-*Equisetum*, B-*Selaginella*, C-*Fern*, D-*Salvinia*  
 b) A-*Selaginella*, B-*Equisetum*, C-*Fern*, D-*Salvinia*  
 c) A- *Fern*, B-*Salvinia*, C- *Equisetum*, D-*Selaginella*  
 d) A- *Salvinia*, B- *Equisetum*, C- *Fern*, D-*Selaginella*

11. Transfer of pollen grain from anther to the stigma of ovary is called

- a) Autogamy                      b) Pollination                      c) Syngamy                      d) Allogamy

12. Which of the following gymnosperms is a bushy trailing shrub?

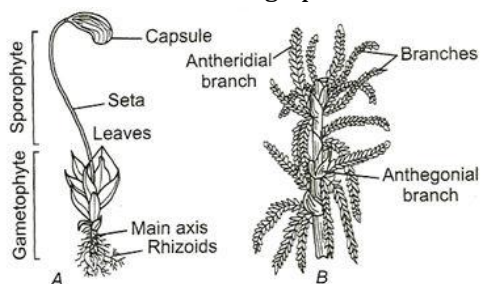
- a) *Ephedra*                      b) *Cycas*                      c) *Pinus*                      d) *Araucaria*

13. Which of the following taxa shows zooidogamous oogamy?

- I. *Spirogyra* II. *Funaria*  
 III. *Pteris* IV. *Cycas*

- a) I, II and III                      b) I, III and IV                      c) I, II and IV                      d) II, III and IV

14. Which of the following options correctly identifies the plants their groups from the following structure?



- a) A-*Funaria*-Moss; B-*Sphagnum*-Moss  
 b) A-*Funaria*-Liverwort; B-*Sphagnum*-Moss  
 c) A-*Selaginella*-Bryophytes; B-*Funaria*-Liverwort  
 d) A-*Selaginella*-Pteridophytes; B-*Funaria*-Moss

15. Smallest flowering plant is  
a) *Ginkgo*                      b) *Wolffia*                      c) Tulip                      d) Sweet bay
16. Gymnosperms lack fruits, why?  
a) Seeds absent                      b) Ovule absent                      c) Ovary absent                      d) Ovary fused
17. *Funaria*, *Polytrichum* and *Sphagnum* are the examples of  
a) Liverworts                      b) Ferns                      c) Mosses                      d) Pteridophytes
18. Pollen sac in *Cycas* is called  
a) Megasporophyll                      b) Megasporangium                      c) Microsporophyll                      d) Microsporangium
19. Chlorenchyma is known to develop in the  
a) Spore capsule of a moss                      b) Pollen tube of *Pinus*  
c) Cytoplasm of *Chlorella*                      d) Mycelium of a green mould such as *Aspergillus*
20. Bryophytes are also called 'amphibians of the plant kingdom' because  
a) Water is essential for reproduction  
b) They are occur in only water  
c) These plants can live in soil but are dependent on water for sexual reproduction  
d) Water is essential for spore formation

PE