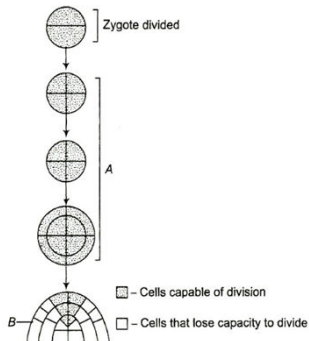


- c) Isolation of zeatin from sugarcane
 d) Both (a) and (c)
7. A sleep movement in plants is a nastic response, that occurs daily in response to
 a) Dark
 b) Light
 c) Water
 d) Both (a) and (b)
8. Synthetic auxins are used for
 a) Killing weeds
 b) Ripening fruits
 c) Increasing the size of the fruits
 d) Stimulating growth of cells in tissue culture
9. In the given diagram, identify the type of growth phase in A and B and choose a correct option accordingly



- a) A-Arithmetic phase; B-Geometric phase
 b) A-Arithmetic phase; B-Arithmetic phase
 c) A-Geometric phase; B-Geometric phase
 d) A-Geometric phase; B-Arithmetic phase
10. How does pruning help in making the hedge dense?
 a) It induces the differentiation of new shoots from the rootstock
 b) It frees axillary buds from apical dominance
 c) The apical shoot grows faster after pruning
 d) It releases wound hormones
11. Which one is not an ethylene effect?
 a) Swelling of axis
 b) Apical hook formation in dicot seedlings
 c) Horizontal growth of seedlings
 d) Apical dominance
12. Which of the following is incorrectly matched?
 a) Explant – Excised plant part used for callus formation
 b) Cytokinins – Root initiation in callus
 c) Somatic embryo- Embryo produced from a vegetative cell
 d) Anther culture- Haploid plants
13. Which plant growth regulator is responsible for triple response?
 a) C_2H_4
 b) IAA
 c) IBA
 d) ABA
14. Choose the incorrect pair.
 a) Auxins – To grow
 b) Gibberellins – *Gibberella fujikuroi*

c) Cytokinins- Herring sperm DNA

d) Abscisic acid – Flowering hormone

15. Which of the following is/are example/s of long day plant?

I. Tomato

II. Maize

III. Rice

IV. Radish

Choose the correct option accordingly

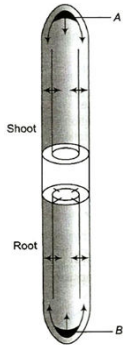
a) I and II

b) III and IV

c) Only IV

d) I, II and III

16. Identify *A* and *B* in the given figure and choose the correct option accordingly



a) A-Root apical meristem; B-Shoot apical meristem

b) A-Shoot apical meristem; B-Root apical meristem

c) A-Apical tissue; B-Radicle tissue

d) A-Radicle tissue; B-Apical tissue

17. Identify two of the following phytohormones, which regulate the stomatal movements?

I. IAA

II. GA_3

III. Zeatin

IV. ABA

a) I and III

b) II and III

c) III and IV

d) II and IV

18. The ripening of fruits can be fastened by treatment with

a) Gibberellins

b) Cytokinins

c) Ethylene

d) Auxin

19. Pruning of plants promotes branching because the axillary buds get sensitized to

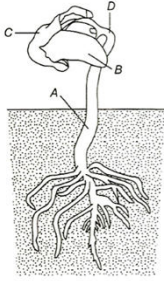
a) Ethylene

b) Gibberellin

c) Cytokinin

d) Indole acetic acid

20. Identify *A*, *B*, *C* and *D* from the given figure and choose the correct accordingly



- a) A-Hypocotyl, B-Cotyledons, C-Seed coat, D-Epicotyl
- b) A-Epicotyl, B-Cotyledons, C-Hypocotyl, D-Seed coat
- c) A-Epicotyl, B-Seed coat, C-Hypocotyl, D-Cotyledon
- d) A-Hypocotyl, B-Seed coat, C-Epicotyl, D-Cotyledon

PE