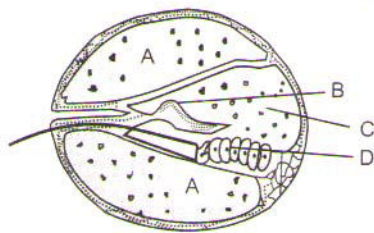


Topic :- Neural Control & Coordination

- Intercellular communication in multicellular organism occurs through
 - Digestive system only
 - Respiratory system only
 - Nervous system only
 - Both nervous and endocrine system
- Which of the following statements are is correct?
 - Dendrites are long fibre, with branched distal end
 - Axons are short fibres which arise from the cell body
 - Cell body of a neuron contains cytoplasm, nucleus with cell organelles and Nissl's granules
 - The dendrites transmits nerve impulses away from the cell body to a synapseThe correct option is
 - Only III
 - I and II
 - I, II and III
 - I, II and IV
- The rods and cones of the retinal layer of eye are modified
 - Hairs
 - Unipolar neurons
 - Bipolar neurons
 - Multipolar neurons
- The order of the three layers of cells in the retina of human eye from inside to outside is
 - Bipolar cells, photoreceptor cells, ganglion cells
 - Ganglion cells, rods, cones
 - Ganglion cells, bipolar cells, photoreceptor cells
 - Photoreceptor cells, ganglion cells, bipolar cells
- Synaptic vesicles contains chemicals called
 - Synaptic fluid
 - Neurotransmitters
 - Vesicular fluid
 - All of these
- The neurons may be
 - Multipolar
 - Bipolar
 - Unipolar
 - All of these

7. The outermost covering of brain is
 - a) Duramater
 - b) Arachnoid
 - c) Pigmater
 - d) Choroid layer
8. In humans, tympanic membrane (ear drum) separates tympanic cavity from
 - a) Pinna
 - b) Auditory meatus
 - c) Eustachian tube
 - d) Cochlea
9. At their resting stage, the body cells exhibit a potential of -5 to -100 mV known as
 - a) Polarization
 - b) Resting potential
 - c) Repolarization
 - d) Depolarization
10. Our paired eyes are located in sockets of the skull called
 - a) Orbits
 - b) Cornea
 - c) Iris
 - d) Lens
11. The decoding and interpretation of visual information is carried out by which part of the brain?
 - a) Cerebellum
 - b) Frontal lobe
 - c) Parietal lobe
 - d) Occipital lobe
12. Given below is a diagrammatic cross-section of a single loop of human cochlea.



Which one of the following options correctly represents the name of three different parts?

- | | |
|-------------------------|----------------------|
| a) A-Tectorial membrane | B-Perilymph |
| C-Secretory cells | D-Endolymph |
| b) A-Endolymph | B-Sensory hair cells |
| C-Serum | D-Tectorial membrane |
| c) A-Sensory hair cells | B-Endolymph |
| C-Tectorial membrane | D-Perilymph |
| d) A-Perilymph | B-Tectorial membrane |
| C-Endolymph | D-Organ of Corti |
13. For the maintenance of ionic gradients across the resting membrane, the sodium-potassium pump transports
 - a) 3Na^+ outwards for 2K^+ into the cell
 - b) 2Na^+ outwards for 2K^+ into the cell
 - c) 3Na^+ inwards for 2K^+ out the cell
 - d) 2Na^+ inwards for 2K^+ out the cell
 14. Comprehension of spoken and written words take place in the region of
 - a) Association area
 - b) Motor area
 - c) Wernicke's area
 - d) Broca's area

