

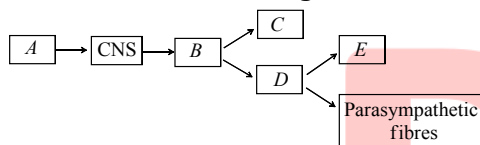
**Class : XI<sup>th</sup>**  
**Date :**

**Subject : BIOLOGY**  
**DPP No. : 6**

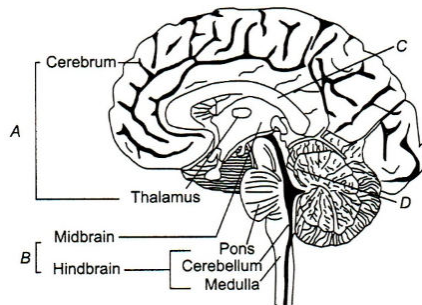
## Topic :- Neural Control & Coordination

- The number of cranial nerves in frog and man is  
 a) 10 and 12                      b) 12 and 10                      c) 10 and 8                      d) 8 and 10
- The chemical used by doctors to dilate pupil for examination is  
 a) Pilocarpine                      b) Atropine                      c) Actinomycin-D                      d) Acetylcholine

- Select the correct arrangement of fibres (A – E) in the diagram given below



- A-Afferent, B-Efferent, C-Somatic motor, D-Autonomic, E-Sympathetic
  - A-Efferent, B-Afferent, C-Somatic motor, D-Autonomic, E-Sympathetic
  - A-Afferent, B-Efferent, C-Autonomic, D-Somatic motor, E-Sympathetic
  - A-Efferent, B-Afferent, C-Autonomic, D-Somatic motor, E-Sympathetic
- Identify the wrong pair  
 a) Corpus luteum-Progesterone                      b) Interstitial cells-Testosterone  
 c) Hypothalamus-FSH                      d) Acrosome – Hyaluronidase
  - Given is the diagram of human brain  
 Identify A,B,C and D correctly



- A-Forebrain, B-Brain stem C-Corpus callosum, D-Cerebral aqueduct
- A-Forebrain, B-Brain stem C-Cerebral aqueduct, D-Corpus callosum
- A-Forebrain, B-Brain stem C-Corpus callosum, D-Cerebral aqueduct

d) A-Forebrain, B-Brain stem C-Cerebral aqueduct, D-Corpus luteum

6. A synapse is formed by the membrane of  
a) Presynaptic axon and a postsynaptic dendrite  
b) Presynaptic dendrite and postsynaptic axon  
c) Presynaptic dendrite and postsynaptic dendrite  
d) None of the above
7. A neuron is said to be in resting state when,  
I. it is not conducting any impulse  
II. plasma membrane is electrically positive outside and negative inside  
III. the nerve fibre is stimulated mechanically or electrically  
IV. plasma membrane is negative outside and positive inside  
The correct option is  
a) III and IV                      b) I and IV                      c) II and III                      d) I and II
8. Patients suffering from cholera are given a saline drip because  
a)  $\text{Na}^+$  ions help in stopping nerve impulses and hence, sensation of pain  
b)  $\text{Na}^+$  ions help in the retention of water in the body tissues  
c) NaCl is an important component of energy supply  
d) NaCl furnishes most of the fuel required for cellular activity
9. Which part of retina consists of only cones?  
a) Fovea centralis                      b) Optic nerve                      c) Blind spot                      d) Chiasmata
10. Following are some nerves. Categorise them as afferent, efferent and mixed nerves according to their nature and then choose the correct option from the codes given below  
I. Trigeminal nerves  
II. Oculomotor nerves  
III. Olfactory nerves  
IV. Auditory cranial nerves  
V. Hypoglossal cranial nerves  
VI. Spinal accessory cranial nerves  
VII. Optic nerves  
VIII. Abducens nerves  
IX. Pathetic nerves  
X. Glossopharyngeal nerves  
XI. Vagus cranial nerves  
XII. Spinal nerves  
XIII. Facial nerves

**Codes**

**Afferent nerves   Efferent nerves   Mixed nerves**

- a) III, VII, IV      II, IX, VIII, VI, V    I, XIII, X, XI, XII
- b) I, XIII, X, XI, XII    III, VII, IV      II, IX, VIII, VI, V
- c) II, IX, VIII, VI, V    I, XIII, X, XI, XII    III, VII, IV
- d) III, VII, VIII      XIII, XI, V, VI      I, II, IV, IX, X, XII

11. The glands, which help on absorbing odoriferous substances to stimulate olfactory nerve are  
 a) Cerumenous glands      b) Meibomian glands    c) Bowman's glands    d) Cowper's glands
12. Which of the following is motor nerve?  
 a) Accessory spinal    b) Vagus                  c) Trigeminal              d) Facial
13. True about electrical synapses  
 I. pre and postsynaptic neurons are in very close proximity  
 II. pre and postsynaptic neurons are separated by synaptic cleft  
 III. impulse transmission is very fast  
 IV. electrical synapses are common in our system  
 Select the correct option  
 a) I, II, III and IV      b) I and III                  c) II and IV                  d) I and II
14. If frog's brain is crushed, even than its leg moves on pinpointing. It called as  
 a) Conditional reflex                  b) Simple reflex  
 c) Neurotransmitter function      d) Autonomic nerve conditions
15. Which of the following statements is correct about the nodes of ranvier?  
 a) Axolemma is discontinuous  
 b) Myelin sheath is discontinuous  
 c) Both neurilemma and myelin sheath are discontinuous  
 d) Covered by myelin sheath
16. Inner part of cerebral cortex is referred as  
 a) White matter                          b) Grey matter  
 c) Both (a) and (b)                      d) Non-myelinated nerve fibres
17. Brains acts as the ...A... and ...B... system.  
 Here, A and B refer to  
 a) Command; control                      b) Voluntary; involuntary  
 c) Compound; voluntary                  d) Control; involuntary

