

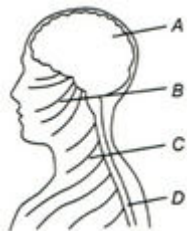
Class : XI<sup>th</sup>  
Date :

Subject : BIOLOGY  
DPP No. : 5

## Topic :- Neural Control & Coordination

1. Arbor vitae is part of  
a) Cerebrum                      b) Cerebellum                      c) Midbrain                      d) Forebrain

2. In the given diagram, identify the components of CNS from the codes given below



**Codes**

- a) B and C                      b) B and D                      c) C and D                      d) A and D
3. Vitreous humour is  
a) Colloid                      b) Watery fluid  
c) Mucoïd connective tissue                      d) All of the above
4. Sense of smell is perceived by  
a) Pituitary                      b) Hypothalamus                      c) Olfactory lobe                      d) Cerebrum
5. In the central nervous system  
a) White matter contains many nerve cell bodies  
b) The myelin sheaths are formed by Schwann cells  
c) The neurons are protected from changes in plasma composition  
d) The cerebrospinal fluid (CSF) is an ultrafiltrate of plasma
6. Meissner's corpuscles occur in  
a) Brain                      b) Nerve cells                      c) Skin                      d) Tongue
7. The wall of the human eyeball is composed of  
a) Sclerotic, choroid and retinal layer                      b) Sclera, cornea and choroid  
c) Sclera, cornea and ciliary body                      d) Sclera, choroid and iris

8. Thermoregulatory centre of human body is associated with  
a) Cerebrum      b) Cerebellum      c) Hypothalamus      d) Medulla oblongata
9. The axons transmit nerve impulses from the cell body to a  
a) Synapse      b) Dendrite of the same cell  
c) Axon of another cell      d) All of these
10. Grey matter of the brain is  
I. present outside the white matter  
II. matter containing medullated nerve fibres  
III. grey in colour  
IV. matter containing cell bodies  
Which of the statements mentioned above are correct?  
a) Only I      b) Only II      c) I, III and IV      d) II, III and IV
11. In the central nervous system, myelinated fibres form the ..., while the non-myelinated fibre cells form the .....
- |  |  |
|--|--|
| a) Grey matter, white matter             | b) White matter, grey matter             |
| c) Ependymal cells, neurosecretory cells | d) Neurosecretory cells, ependymal cells |
12. Pneumotaxic centre which can moderate the functions of the respiratory rhythm centre is present at
- |                         |                              |
|-------------------------|------------------------------|
| a) Pons region of brain | b) Thalamus                  |
| c) Spinal cord          | d) Right cerebral hemisphere |
13. Which of the following cranial nerves is present in rabbit but absent in frog?  
a) Glossopharyngeal    b) Hypoglossal      c) Olfactory      d) Optic
14. Hypothalamus does not control  
a) Hunger and satiety    b) Thermoregulation    c) Osmoregulation    d) Emotions
15. Arrange the following events in a correct order that lead to the formation of an auditory impulse in human ears from the codes given below  
I. Vibration is transferred from the malleus to the incus and then to stapes  
II. Basiliar membrane moves up and down  
III. Nerve impulse is transmitted by cochlear nerve to auditory cortex of brain for impulse analysis and recognition  
IV. Sound waves pass through ear canal  
V. Stereocilia of hair cells of organ of Corti rub against tectorial membrane  
VI. Sound waves causes ear drum to vibrate  
VII. Nerve impulse is generated

VIII. Vibrations move from fluid of vestibular canal to the fluid tympanic canal

IX. Membrane at oval window vibrates

**Codes**

a) IV, VI, I, IX, VIII, II, V, VII, III

b) I, II, III, IV, V, VI, VII, VIII, IX

c) IX, VIII, VII, VI, V, IV, III, II, I

d) IV, VI, I, VIII, IX, II, V, VII, III

16. Which is the largest body cell?

a) Neurons

b) RBCs

c) Osteocytes

d) Sperms

17. Which one of the following pairs of structures distinguishes a nerve cell from other types of cell?

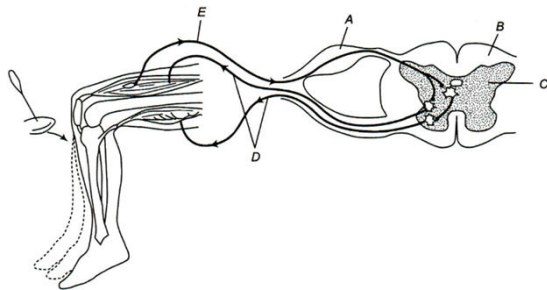
a) Perikaryon and dendrites

b) Vacuoles and fibres

c) Flagellum and medullary sheath

d) Nucleus and mitochondria

18. Identify the parts labelled as *A* and *E* and choose the correct option for the diagrammatic representation of reflex action showing knee-jerk reflex



a) A-Dorsal root ganglion, B-White matter, C-Gray matter, D-Afferent pathway, E-Efferent pathway

b) A-Dorsal root ganglion, B-White matter, C-Gray matter, E-Efferent pathway, D-Afferent pathway

c) A-Dorsal root ganglion, B-Gray matter, C-White matter, E-Efferent pathway, D-Afferent pathway

d) A-Ventral root ganglion, B-White matter, C-Gray matter, E-Efferent pathway, D-Afferent pathway

19. The medulla contains centres which control

a) Respiration

b) Cardiovascular reflexes

c) Gastric secretions

d) All of the above

20. Cranium is the protective covering of

a) Lungs

b) Eye balls

c) Brain

d) Uterus