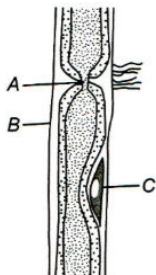


Topic :- Neural Control & Coordination

1. Given below the diagram of an axon. Label A to C correctly



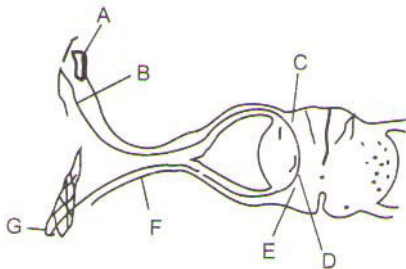
- a) A-Endoneurium, B-Neurolemma, C-Nucleus
b) A-Neurolemma, B-Endoneurium, C-Schwann cell
c) A-Node of Ranvier, B-Neurolemma, C-Schwann cell
d) A-Neurolemma, B-Node of Ranvier, C-Schwann cell
2. Internal ear is filled with
a) Perilymph b) Endolymph c) Lymph d) Both (a) and (b)
3. At the posterior pole of the eye lateral to the blind spot, there is a yellowish pigmented spot called
a) Corpus luteum b) Fovea c) Macula quadrigenina d) Macula lutea
4. The electrical potential difference between outside and inside of a nerve axon before excitation is known as
a) Resting potential b) Action potential c) Spike potential d) Reaction potential
5. Which of the following statement is incorrect?
a) CNS is the site of information processing and control
b) CNS includes brain and spinal cord
c) PNS comprises of all the nerves of the body associated with CNS
d) The nerve fibre of DNS are of two types, *i.e.*, afferent and efferent fibres
6. Taste area lies in the
a) Frontal lobe b) Occipital lobe c) Parietal lobe d) Temporal lobe

7. Functions of association areas in cerebral cortex includes
- a) Intersensory associations
 - b) Memory
 - c) Communication
 - d) All of the above
8. In which of the following, Nissl's granules are found in?
- a) Liver cells
 - b) Nerve cells
 - c) Intestinal cells
 - d) Uriniferous tubules
9. The purplish red pigment rhodopsin contained in the rods type of photoreceptor cells of the human eyes is a derivative of
- a) Vitamin-C
 - b) Vitamin-D
 - c) Vitamin-A
 - d) Vitamin-B
10. The functions of the organs/organ system in our body must be coordinated to maintain Complete the given statement with reference to NCERT textbook
- a) Muscular activity
 - b) Homeostasis
 - c) Respiration
 - d) Neural coordination
11. Cerebral hemispheres of rat are connected by
- a) Corpus luteum
 - b) Corpus callosum
 - c) Corpus albicans
 - d) Corpus spongiosum
12. Multipolar neurons are found in the
- a) Retina of eye
 - b) Cerebral cortex
 - c) Embryonic stage
 - d) None of these
13. The system, responsible for providing an organized network of point to point connections for a quick coordination, is called
- a) Endocrine system
 - b) Circulatory system
 - c) Digestive system
 - d) Neural system
14. The nerve fibres are enveloped with Schwann cells, which form a myelin sheath around the axon
- a) Myelinated
 - b) Non-myelinated
 - c) Afferent
 - d) Efferent
15. The black pigment layer in human eye, that reduces internal reflection is located in
- a) Iris
 - b) Retina
 - c) Cornea
 - d) Sclerotic
16. Which of the following is not an organ of central nervous system?
- a) Brain
 - b) Cranial nerves
 - c) Spinal cord
 - d) None of these
17. Dilatation of pupil takes place by
- a) Sympathetic nervous system
 - b) Parasympathetic nervous system
 - c) Central nervous system
 - d) Both (a) and (b)

18. In a myelinated neuron, two adjacent myelin sheaths are separated by gaps called
a) Nodes of Ranvier b) Synaptic cleft c) Schwann cells d) Synaptic knob

19. Which brain structure in rabbit is directly related to vision?
a) Corpus albicans b) Hippocampal lobe
c) Corpus callosum d) Corpora quadrigemina

20. The following diagram indicates the reflex arc. Identify the parts labeled as A, B, C, D, E, F and G and choose the correct option.



- a) A-Sense organ, B-Sensory nerve, C-Dorsal horn, D-Interneuron, E-Ventral horn, F-Motor nerve, G-Effector
- b) A-Sense organ, B-Sensory nerve, C-Ventral horn, D-Interneuron, E-Dorsal horn, F-Motor nerve, G-Effector
- c) A-Sense organ, B-Motor nerve, C-Dorsal horn, D-Interneuron, E-Ventral nerve, F-Sensory nerve, G-Effector
- d) A-Effector, B-Motor nerve, C-Ventral horn, D-Interneuron, E-Dorsal horn, F-Sensory nerve, G-Sense organ