



9. Lipid bilayer is present in  
a) Plasma membrane    b) Ribosome    c) Chromosome    d) Nucleolus
10. Endoplasmic reticulum is in continuation with  
a) Golgi body    b) Nuclear wall    c) Mitochondria    d) Cell wall
11. Which of the following is the filler substance of the matrix of eukaryotic cell?  
a) Pectin    b) Cutin    c) Lignin    d) Suberin
12. Which of the following does not contain DNA?  
a) Mitochondria    b) Chloroplast    c) Peroxisome    d) Nucleus
13. The fluidity of membranes in a plant in cold weather may be maintained by  
a) Increasing the number of phospholipids with unsaturated hydrocarbon tails  
b) Increasing the proportion of integral proteins  
c) Increasing concentration of cholesterol in membrane  
d) Increasing the number of phospholipids with saturated hydrocarbon tail
14. In a double helix of DNA molecule of 10 coils, if there are 30 adenine nitrogen bases, what is the number of guanine nitrogen bases?  
a) 30    b) 60    c) 70    d) 80
15. The study related to the structure and function of a cell is called  
a) Physiology    b) Cytology    c) Histology    d) Cellology
16. Cell theory was proposed by  
a) Virchow    b) Schleiden and Schwann  
c) Robert Hooke    d) Barbara McClintock
17. Pits present in the wall of plant cells helps to produce a protoplasmic continuum, called..... amongst cells  
a) Apoplast    b) Symplast    c) Osmosis    d) None of these
18. Main component of ribosome are  
a) DNA and RNA    b) RNA and protein    c) DNA and protein    d) Protein and lipids

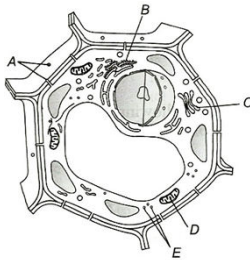
19. Statements

- I. The four nucleotide bases are not necessarily present in DNA in exact equal proportions.
- II. The total amount of purines are equal to the total amount of pyrimidines.
- III. DNA ligase enzyme act to hydrolyse or breakdown a polynucleotide chain into its component nucleotides.
- IV. Nuclease enzymes are capable of restoring an intact DNA duplex.

Of the above statements

- a) II is correct, but I, III and IV are wrong
- b) I and II are wrong but III and IV are correct
- c) I, II and III are correct but IV is wrong
- d) I and II are correct but III and IV are wrong

20. The following diagram shows some of the missing structures in a plant cell (A-E). Identify the structures



- a) A-Plasmodesmata, B-Rough endoplasmic reticulum, C-Golgi apparatus, D-Mitochondrion, E-Ribosomes
- b) A-Desmosome, B-Rough endoplasmic reticulum, C-Golgi apparatus, D-Mitochondrion, E-Ribosomes
- c) A-Plasmodesmata, B-Smooth endoplasmic reticulum, C-Golgi apparatus, D-Mitochondrion, E-Ribosomes
- d) A-Tight junction, B-Rough endoplasmic reticulum, C-Golgi apparatus, D-Mitochondrion, E-Ribosomes