

Class : XIth
Date :

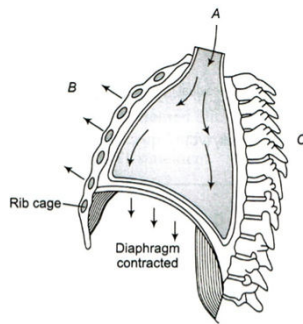
Subject : BIOLOGY
DPP No. : 1

Topic :- Breathing and Exchange of gases

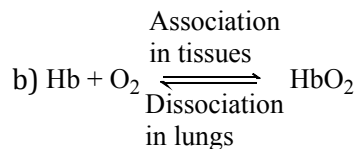
- Arrange the following in the order of increasing volume
I.Tidal volume
II.Residual volume
III.Expiratory reserve volume
IV.Vital capacity
a) I < II < III < IV b) I < III < II < IV c) I < IV < III < II d) I < IV < II < III
- Chloride shift occurs in response to
a) HCO_3^- b) K^+ c) H^+ d) Na^+
- Which situation would result in the greatest degree of O_2 situation for haemoglobin, if $p\text{O}_2$ remains constant?
a) Increased CO_2 level, decreased temperature
b) Decreased CO_2 level, decreased temperature
c) Increased CO_2 level, increased temperature
d) Decreased CO_2 level, increased temperature
- Blood do not become acidic although it carries CO_2 because
a) CO_2 is continuously diffused though tissues b) CO_2 combines with H_2O to form H_2CO_3
c) In CO_2 transport, buffers plays an important role d) CO_2 is absorbed by WBC
- On high mountains difficulty in breathing is due to
a) Decrease in partial pressure of oxygen b) Decrease in amount of oxygen
c) Increase in carbon dioxide concentration d) All of the above
- What is Bohr's effect?
a) Raise of $p\text{CO}_2$ or fall in pH decreases the oxygen affinity of haemoglobin
b) Decrease of $p\text{CO}_2$ or fall in pH decreases the oxygen affinity of haemoglobin
c) Raise of $p\text{CO}_2$ or increase in pH decreases the oxygen affinity of haemoglobin
d) Shifting of the oxygen-haemoglobin curve to left
- One of the major cause of emphysema is

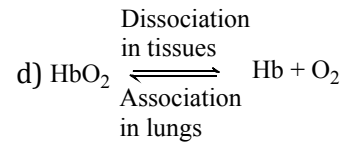
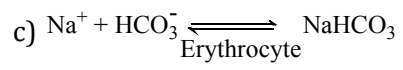
- a) Pollution b) Smog c) Cigarette smoking d) Sanitary condition
8. Animals who use their skin as an accessory respiratory organ are
I. lizard II. frog
III. rabbit IV. Zebra
Choose the correct option
a) I and II b) Only I c) IV and II d) Only II
9. When the oxygen supply to the tissues is inadequate, the condition is
a) Hypoxia b) Asphyxia c) Pleuracy d) Anoxia
10. The percentage of oxygen in inhaled air is about
a) 21% b) 16% c) 79% d) 4%
11. State whether the given statements are true or false
I. Respiration in humans is an active process
II. Diaphragm helps in generating the pressure gradient in the lungs
Choose the correct option
a) I - True, II - False b) I - True, II - True c) I - False, II - True d) I - False, II - False
12. When carbon dioxide concentration in blood increases, breathing becomes
a) Shallower and slow b) There is no effect on breathing
c) Slow and deep d) Faster and deeper
13. I. Intra pulmonary pressure remains less than the atmospheric pressure
II. There is negative pressure in the lungs than the atmospheric pressure
In which of the above two situations inspiration takes place?
Choose the correct option accordingly?
a) Only I b) Only II c) Both I and II d) I or II
14. Under which condition, dissociation of oxygen from oxyhaemoglobin in tissues occurs?
a) Low ρO_2 b) High ρCO_2 c) High H^+ d) All of these

15. In the given diagram, identify what is depicted by A,B and C
Choose the correct option



- a) A-Air going out from lungs, B-Ribs and sternum relaxed, C-Volume of thorax increased
 b) A-Air entering lungs, B-Ribs and sternum relaxed, C-Volume of thorax increased
 c) A-Air entering lungs, B-Ribs and sternum raised, C-Volume of thorax increased
 d) A-Air going out from lungs, B-Ribs and sternum relaxed, C-Volume of thorax decreased
16. Which of the following statement is false?
 a) The conducting part of the respiratory system transports the atmospheric air to alveoli
 b) Conducting part of the respiratory system clears the air from foreign particles, humidifies and brings it to the body temperature
 c) Exchange part of the respiratory system is the actual site at which O_2 and CO_2 exchange takes place
 d) None of the above
17. Lungs comprises
 a) Network of bronchi b) Bronchioles c) Alveoli d) All of these
18. Which of the following statement is incorrect about nasopharynx?
 a) Internal nostrils opens into nasopharynx
 b) It is the common passage for air only
 c) It is a portion of pharynx
 d) Nasopharynx opens through the glottis of the larynx region into the trachea
19. Pneumonia is an infection of
 a) Trachea b) Larynx c) Vocal cord d) Lungs
20. Which of the following equation is correct?





PE