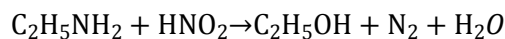


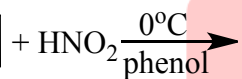
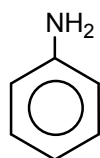
Topic :- Amines

1 (b)



ethyl amine ethyl alcohol

(1° aliphatic amine)



1° aromatic amine

∴ Dye test is used to distinguish between 1° aliphatic and

1° aromatic amine

2 (a)

Hofmann bromamide degradation takes place with complete retention of stereochemical configuration in the migrating alkyl group

3 (d)



Benzene sulphonyl N-alkyl benzene soluble in KOH

chloride sulphonamide

4 (b)

The conversion of $-\text{CN}$ to $-\text{CH}_2\text{NH}_2$ by catalytic reduction is called Mendius reaction.

7 (c)



ethyl amine ethanol ethyl chloride ethyl amine

1. (B) (C)

8 (a)

Azoxybenzene is the main product when reducing agent used is $\text{Na}_3\text{AsO}_3/\text{NaOH}$

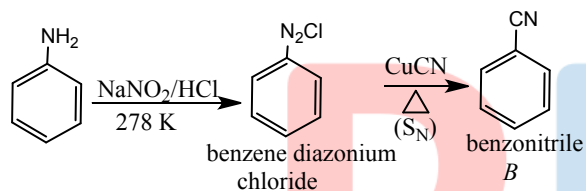
9 (d)

$\text{C}_6\text{H}_5\text{COCl}$ has no reaction with carboxylic acids.

10 (d)

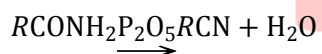
$\text{CH}_3\text{NH}_3\text{Cl}$ is acidic in nature.

13 (b)

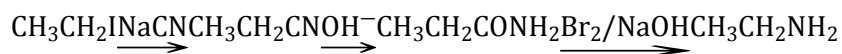


Formation of *A* is by diazotization and formation of *B* from *A* is by S_N reaction.

14 (a)

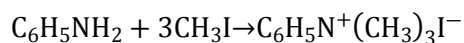


15 (a)



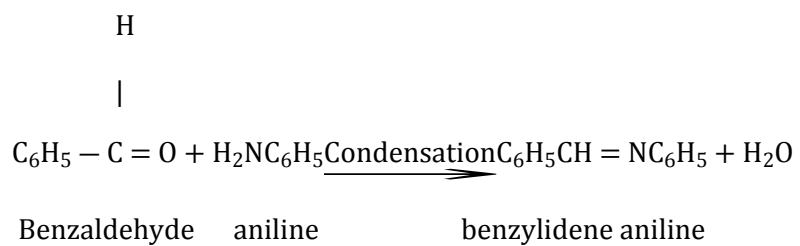
17 (c)

Amines react with alkyl halide (excess) to give quaternary ammonium salt.



19 (c)

Reaction of aniline with benzaldehyde is condensation reaction.



PE

ANSWER-KEY										
Q.	1	2	3	4	5	6	7	8	9	10
A.	B	A	D	B	A	A	C	A	D	D
Q.	11	12	13	14	15	16	17	18	19	20
A.	B	D	B	A	A	A	C	D	C	B

PE